



# TAJMAC – BRASIL

**TAJMAC Brasil Ltda**

Rua Benedito Geraldo Cruz, 204,  
Terra Nobre CEP:13290-000  
Louveira SP

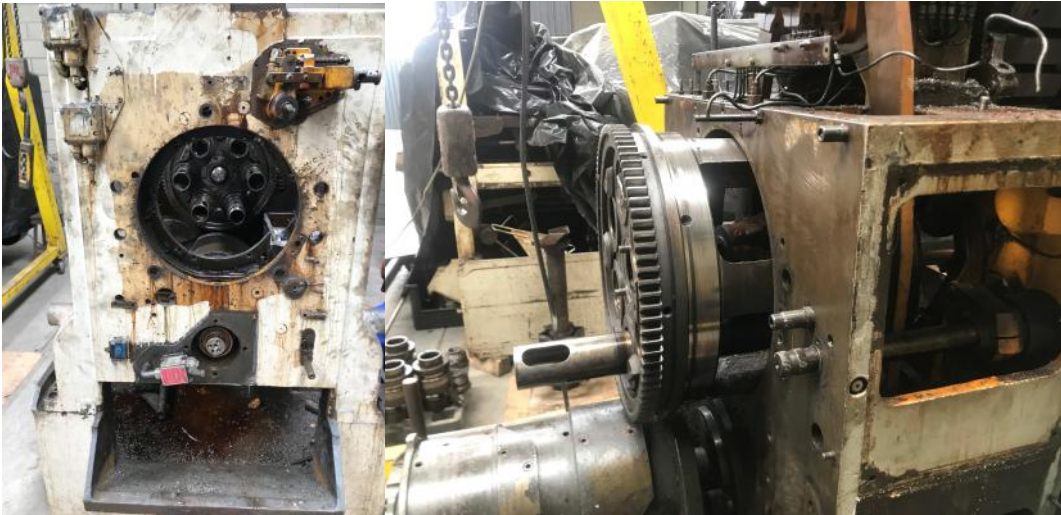
t: +55 (19) 3292 6262

adm@tajmac-br.com

[www.tajmacbr.com](http://www.tajmacbr.com)

Louveira SP 16/03/2021

Wickman bought a machine Wickman 1.3/4"-6 serial 16227 from Brazilian market, that was working for 30 years making millions of parts, it was not full of parts and the part was present was not good for the Wickman's Standard so we decide to strip it down and make a check it over of level 3.



We know all our machines and we know the history of all the machines that stay on our Customers, we look after them in according with the actual Owner of the machine, for guarantee a longer machine life and a better finance return for the machine Owner



This machine was been survised from Mr.Marcos Ferreri who's specialiazed in this kind of work. Mr.Marcos valuate the machine and bring the report to the head office in Coventry, where the technical department decide what work should be done for make the machine back at the Wickman standard.

TAJMAC Brasil  
Benedito Geraldo Cruz, 204 - Galpão 01 - Terra Nobre  
Louveira - SP - Brasil CEP 13290-000  
Fone: +55 19 3515 7337

WICKMAN Coventry  
Discovery Way, Leofric Business Park  
Binley, Coventry CV3 2TD - ENGLAND  
Tel: +44 (0) 2476547900



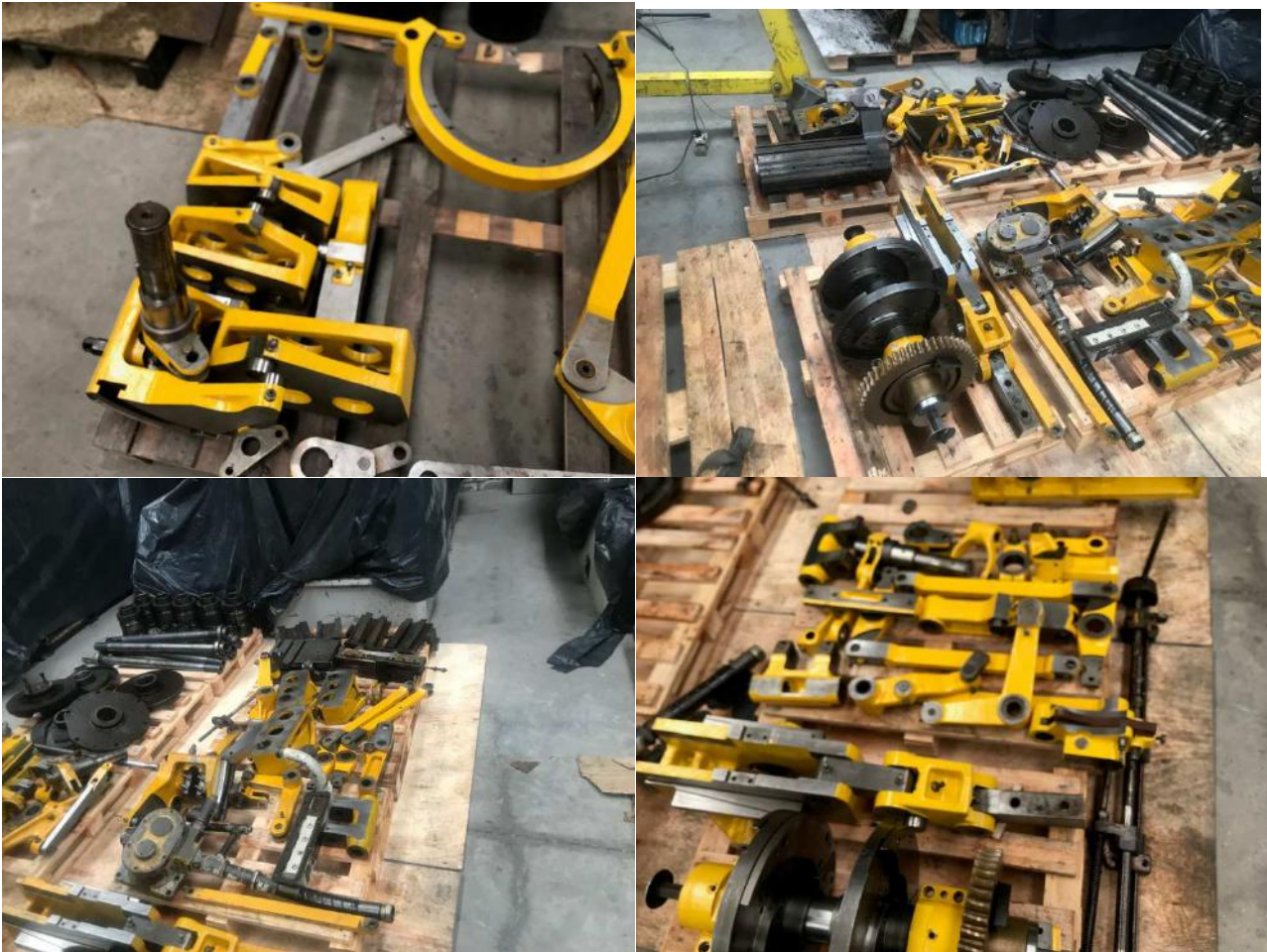
# TAJMAC – BRASIL

**TAJMAC Brasil Ltda**  
Rua Benedito Geraldo Cruz, 204,  
Terra Nobre CEP:13290-000  
Louveira SP

Louveira SP 16/03/2021

t: +55 (19) 3292 6262

adm@tajmac-br.com  
[www.tajmacbr.com](http://www.tajmacbr.com)



- 1- Upper cam shaft was not in so bad conditions, check it over and make sure that part of the machine is perfect condition, disassembly completely and reassemble with all the ware parts changed with new original parts Wickman





# TAJMAC – BRASIL

**TAJMAC Brasil Ltda**

Rua Benedito Geraldo Cruz, 204,  
Terra Nobre CEP:13290-000  
Louveira SP

t: +55 (19) 3292 6262

adm@tajmac-br.com

[www.tajmacbr.com](http://www.tajmacbr.com)

Louveira SP 16/03/2021



All the bushes was been changed and the part tested before reassembled for guarantee it with the Wickman name

Part complete tested and reassembled , back to the original conditions



- 2- Gears room figure down here and the Clutch area figure down here it was not bad but all the components was very poorly and was not possible consider the machine reliable, all the clutch was been disassembled and refurbish with new bearings and new original Wickman spare parts,the follow pictures show the work been done on this area...



# TAJMAC – BRASIL

**TAJMAC Brasil Ltda**

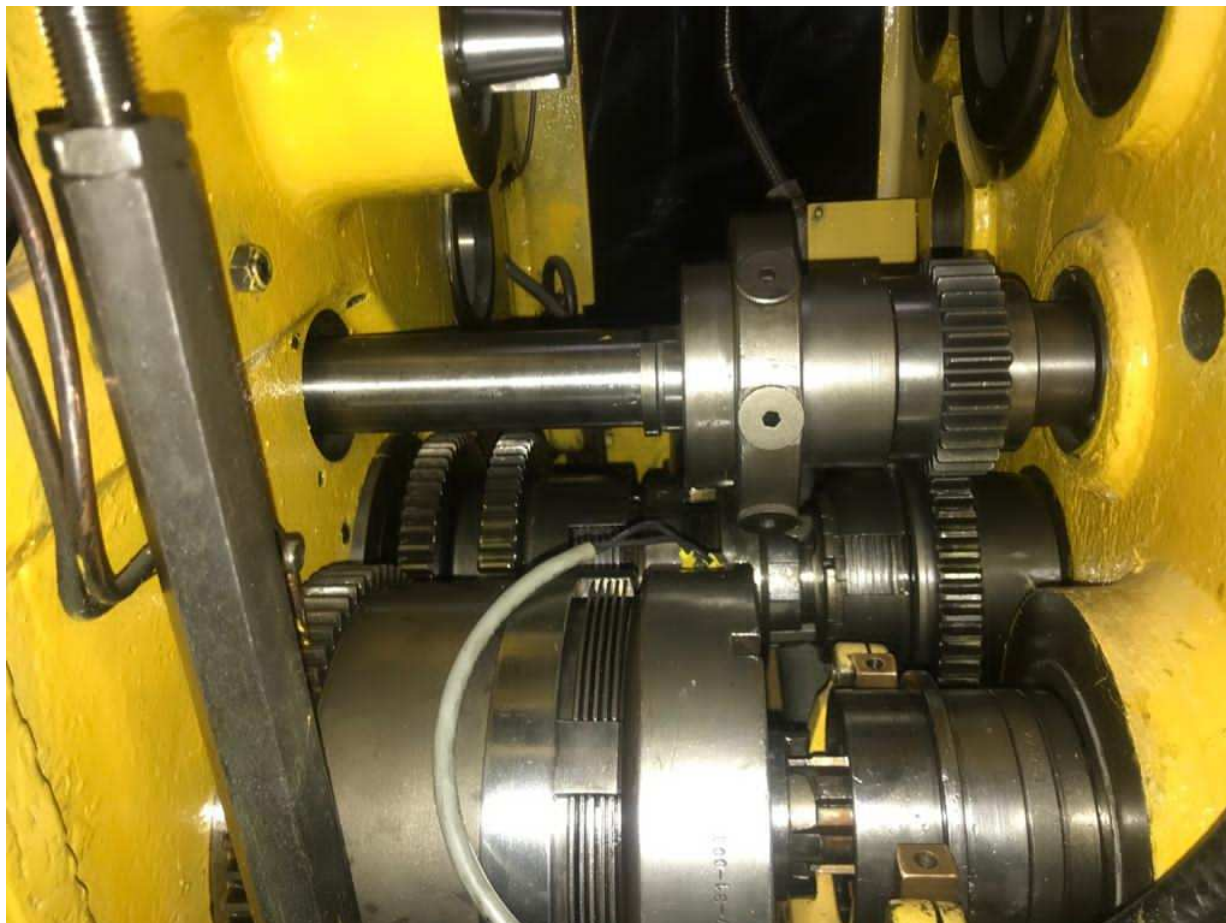
Rua Benedito Geraldo Cruz, 204,  
Terra Nobre CEP:13290-000  
Louveira SP

t: +55 (19) 3292 6262

adm@tajmac-br.com

[www.tajmacbr.com](http://www.tajmacbr.com)

Louveira SP 16/03/2021



TAJMAC Brasil  
Benedito Geraldo Cruz, 204 - Galpão 01 - Terra Nobre  
Louveira - SP - Brasil CEP 13290-000  
Fone: +55 19 3515 7337

WICKMAN Coventry  
Discovery Way, Leofric Business Park  
Binley, Coventry CV3 2TD - ENGLAND  
Tel: +44 (0) 2476547900



# TAJMAC – BRASIL

**TAJMAC Brasil Ltda**

Rua Benedito Geraldo Cruz, 204,  
Terra Nobre CEP:13290-000  
Louveira SP

t: +55 (19) 3292 6262

adm@tajmac-br.com

[www.tajmacbr.com](http://www.tajmacbr.com)

Louveira SP 16/03/2021

- 3- Drum was been completely refurbish with all new spindle bearings and all the cap need to be changed for the level 3 in according with Wickman UK.



- 4 Feeding area was not in bad conditions but the ware parts had to be changed for guarantee the reliable of the machine, all the bushes and toggle operating sleeves was been changed.



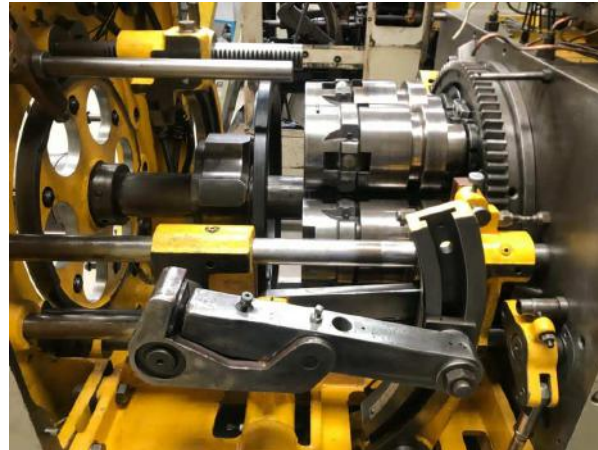
# TAJMAC – BRASIL

**TAJMAC Brasil Ltda**  
Rua Benedito Geraldo Cruz, 204,  
Terra Nobre CEP:13290-000  
Louveira SP

Louveira SP 16/03/2021

t: +55 (19) 3292 6262

adm@tajmac-br.com  
[www.tajmacbr.com](http://www.tajmacbr.com)



- 4 Srg was very dirty and ware, again cleaned and check it over 100% with changed all the bushes, all the part are passed the Wickman test, all slides stripped down refurbished .





# TAJMAC – BRASIL

**TAJMAC Brasil Ltda**  
Rua Benedito Geraldo Cruz, 204,  
Terra Nobre CEP:13290-000  
Louveira SP

Louveira SP 16/03/2021

t: +55 (19) 3292 6262

adm@tajmac-br.com  
[www.tajmacbr.com](http://www.tajmacbr.com)



TAJMAC Brasil  
Benedito Geraldo Cruz, 204 - Galpão 01 - Terra Nobre  
Louveira - SP - Brasil CEP 13290-000  
Fone: +55 19 3515 7337

WICKMAN Coventry  
Discovery Way, Leofric Business Park  
Binley, Coventry CV3 2TD - ENGLAND  
Tel: +44 (0) 2476547900



# TAJMAC – BRASIL

**TAJMAC Brasil Ltda**

Rua Benedito Geraldo Cruz, 204,  
Terra Nobre CEP:13290-000  
Louveira SP

t: +55 (19) 3292 6262

adm@tajmac-br.com

[www.tajmacbr.com](http://www.tajmacbr.com)

Louveira SP 16/03/2021



Wickman Coventry Ltd. fabricou e vendeu a  
Wickman 1.3/4"-6, número de série 16227,  
no ano de 1977



TAJMAC Brasil  
Benedito Geraldo Cruz, 204 - Galpão 01 - Terra Nobre  
Louveira - SP - Brasil CEP 13290-000  
Fone: +55 19 3515 7337

WICKMAN Coventry  
Discovery Way, Leofric Business Park  
Binley, Coventry CV3 2TD - ENGLAND  
Tel: +44 (0) 2476547900



# TAJMAC - BRASIL

**TAJMAC Brasil Ltda**

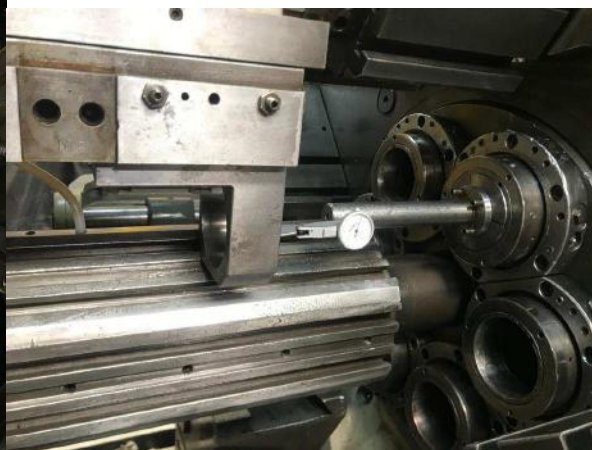
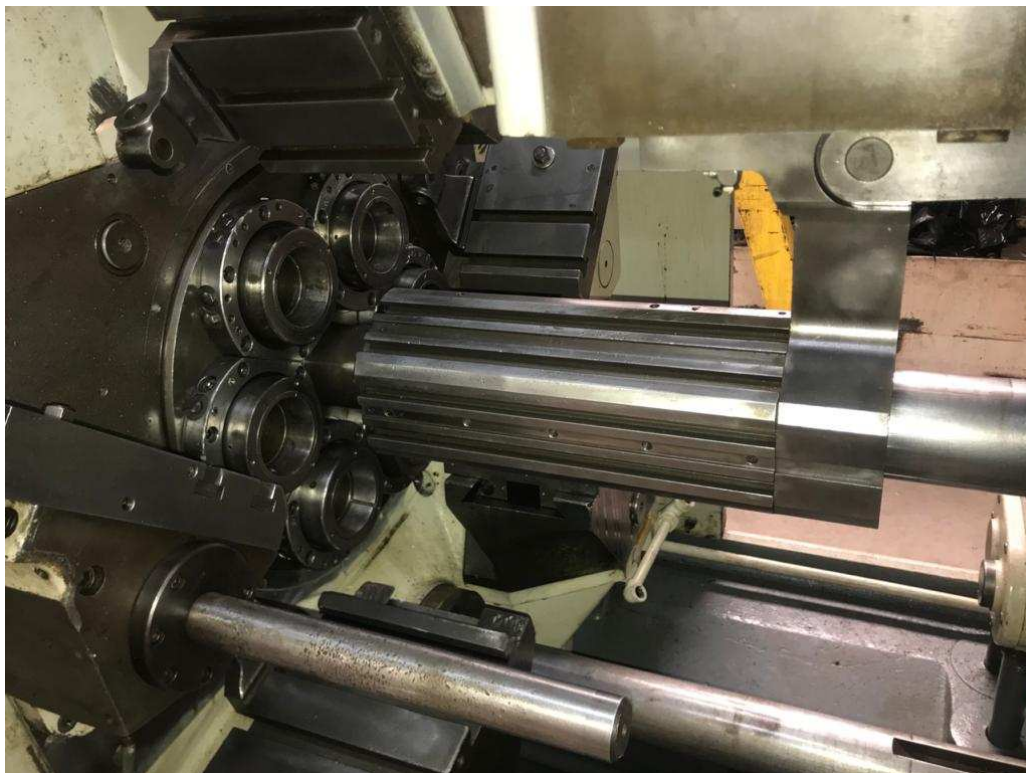
Rua Benedito Geraldo Cruz, 204,  
Terra Nobre CEP:13290-000  
Louveira SP

t: +55 (19) 3292 6262

[adm@tajmac-br.com](mailto:adm@tajmac-br.com)

[www.tajmacbr.com](http://www.tajmacbr.com)

Louveira SP 16/03/2021



A máquina ultrapassou a produção de milhões de peças durante os seus muitos anos de funcionamento.

TAJMAC Brasil  
Benedito Geraldo Cruz, 204 - Galpão 01 - Terra Nobre  
Louveira - SP - Brasil CEP 13290-000  
Fone: +55 19 3515 7337

WICKMAN Coventry  
Discovery Way, Leofric Business Park  
Binley, Coventry CV3 2TD - ENGLAND  
Tel: +44 (0) 2476547900



# TAJMAC - BRASIL

**TAJMAC Brasil Ltda**

Rua Benedito Geraldo Cruz, 204,  
Terra Nobre CEP:13290-000  
Louveira SP

t: +55 (19) 3292 6262

adm@tajmac-br.com

[www.tajmacbr.com](http://www.tajmacbr.com)

Louveira SP 16/03/2021



**Maquinas que atende a normativa de segurança**



**Laudo aprovado e registrado pelo ente especializado**

**Torno Wickman Multifuso 1.3/4" x 6**

**número de série 16227**

**TAJMAC Brasil**

TAJMAC Brasil  
Benedito Geraldo Cruz, 204 - Galpão 01 - Terra Nobre  
Louveira - SP - Brasil CEP 13290-000  
Fone: +55 19 3515 7337

WICKMAN Coventry  
Discovery Way, Leofric Business Park  
Binley, Coventry CV3 2TD - ENGLAND  
Tel: +44 (0) 2476547900